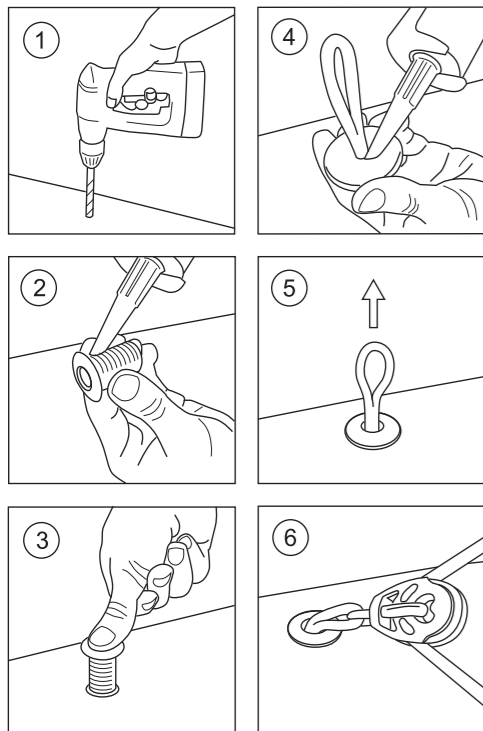




INSTRUCTION SHEET

R/EVOLUTION TECHNOLOGY

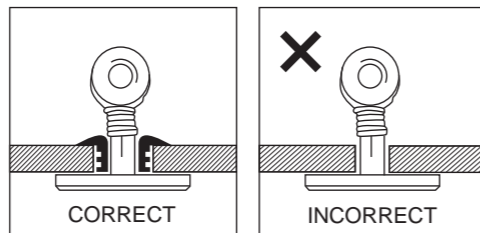
Installing the Ropeye is easier than with other similar connections on the market and only takes a few minutes to complete. Ropeye is watertight and lighter than usual metal parts used. With Ropeye the loading will be logically spread.



1. Drill a hole through the deck according to the size of your Ropeye and Through Deck Pushing (TDP)
2. Cut the TDP into the right thickness of the deck. Seal the TDP with Sikaflex
3. Push the TDP into the hole in the deck. Let it dry before installing the Ropeye
4. Seal the Ropeye with Sikaflex and push it through the hole from inside
5. Give some tension by pulling the eye of the Ropeye from the top.
6. Attach the block to the eye. Best with loop blocks.

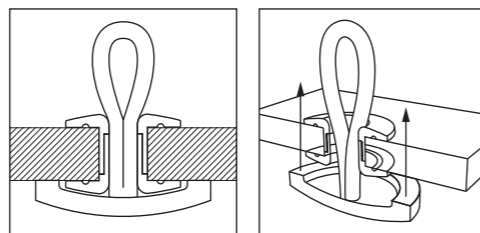
NB! Always choose the right Ropeye according to the working load.

IMPORTANT



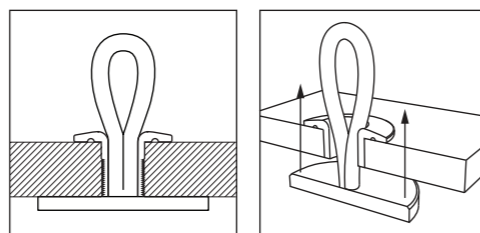
Never use Ropeye without Through Deck Pushing. Always use Through Deck Pushing with Ropeye when installing to prevent the rope from wear and friction.

ROPEYE PRO™



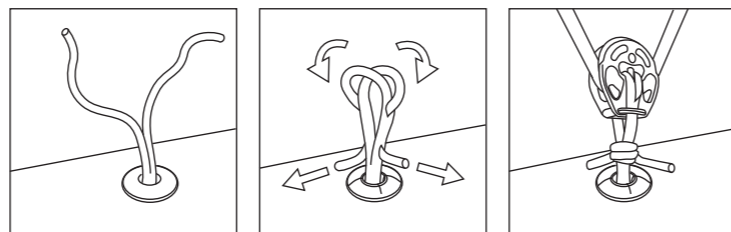
The Ropeye Pro comes with a curved pad, which distributes live loads evenly across the profile and results in greater strength. The products provide maximum durability for heavy loads

ROPEYE LOOP™



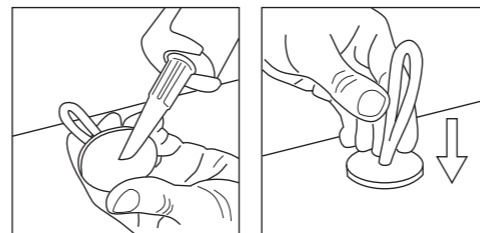
Ropeye Loop comes with a carbon fibre pad, which ensures that the load is spread evenly. The products provide stable quality.

ROPEYE TWINLINE™



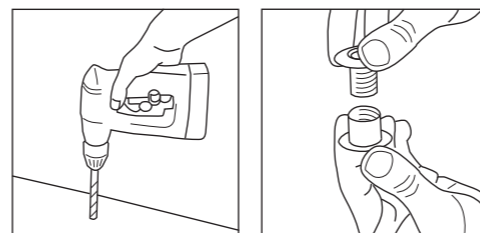
Ropeye Twinline helps you attach the block straight to Ropeye without any additional parts. You can adjust the length of the noose. Stick the ends of the ropes through each other and tie them up around two ends. Tighten and check that the tie is not loose and will not open by itself.

ROPEYE XS™



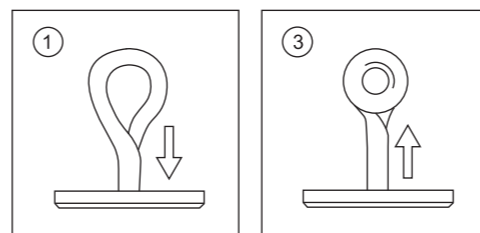
Ropeye XS loops are suitable for inside fittings. Just seal the backside of Ropeye XS with Sikaflex and attach it to the surface.

ROPEYE DOUBLE TDP™



Adjustable Double TDP is entirely waterproof, strengthens the deck, and protects it against abrasion.

SELF LOCKING RING™



Self Locking Ropeye™ does not need additional fasteners for the ring. Self Locking Ring™ stays in the noose of the Ropeye by itself.

PRODUCT SPECIFICATIONS

Product Code	Rope Diam mm	Eye Length mm	Pad Diam mm	Breaking Load kg	Working Load kg	TDP Code
Ropeye PRO 50/40-4	4	40	50	2200	1100	TDP 10
Ropeye PRO 50/60-4	4	60	50	2200	1100	TDP 10
Ropeye PRO 50/80-4	4	80	50	2200	1100	TDP 10
Ropeye PRO 60/60-6	6	60	60	4400	2200	TDP 14
Ropeye PRO 60/80-6	6	80	60	4400	2200	TDP 14
Ropeye PRO 60/100-6	6	100	60	4400	2200	TDP 14
Ropeye PRO 70/100-8	8	80	70	7000	3500	TDP 18
Ropeye PRO 70/100-8	8	100	70	7000	3500	TDP 18
Ropeye PRO 70/100-8	8	120	70	7000	3500	TDP 18

Product Code	Rope Diam mm	Eye Length mm	Pad Diam mm	Breaking Load kg	Working Load kg	TDP Code
Ropeye Loop 40-4	4	40	50	1900	800	TDP 14
Ropeye Loop 60-4	4	60	50	1900	800	TDP 14
Ropeye Loop 80-4	4	80	50	1900	800	TDP 14
Ropeye Loop 40-5	5	40	50	2900	1450	TDP 16
Ropeye Loop 60-5	5	60	50	2900	1450	TDP 16
Ropeye Loop 80-5	5	80	50	2900	1450	TDP 16
Ropeye Loop 40-6	6	40	60	3900	1950	TDP 18
Ropeye Loop 60-6	6	60	60	3900	1950	TDP 18
Ropeye Loop 80-6	6	80	60	3900	1950	TDP 18

Product Code	Rope Diam mm	Max eye Length mm	Pad Diam mm	Breaking Load kg	Working Load kg	TDP Code
Ropeye TWL 4	4	200	50	1900	800	TDP 14
Ropeye TWL 5	5	200	50	2900	1450	TDP 16
Ropeye TWL 6	6	200	50	3900	1950	TDP 18

Ropeye Main Product Range specifications are shown in the chart. Every product packaging comes with a product-code and details. Products may vary, check the information on the package.

WARRANTY

All Ropeye products come with a 2-year warranty. Ropeye does not take responsibility for products that have not been installed, used and maintained properly.

Improper installation may cause damage to you or your sail-boat rigging. When any kind of deformation occurs, change the product.

PRIOR TO INSTALLATION FAMILIARIZE YOURSELF WITH PRODUCT CHARACTERISTICS AND INSTRUCTIONS ON OUR WEBSITE

www.ropeye.com

Ropeye is Registered European Community Design and Trademark No.001974635-0001; No.001974635-0002; No.001974635-0003; No.001974635-0004; US Patent Pending No. 29413317
Produced in Estonia, European Union
ropeye@ropeye.com
www.ropeye.com