



Cleats for clamping onto tubes and poles

A selection of nylon and alloy cleats to fit tubes 20mm to 43mm ($13/16$ " to $111/16$ ") diameter.

- Ideal for aluminium and composite poles.
 - Easy to fit , no holes to drill.
 - Simple to adjust and maintain rope tension.
- Used for flagpoles and boat rails.



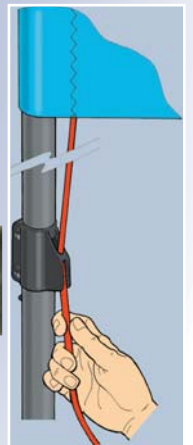
CL244+
CL111



CL243+
CL072



CL235



CL265AN

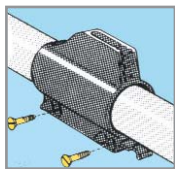
The CL265 grips ropes going across the tube.



Cleats for clamping onto tubes and poles, specification and rigging

We can advise on the parts required for a particular application.
Different colours are available to special order.

RopeØ	Reference	Description	TubeØ
3-6mm 1/8" - 1/4"	CL235 cleat	Nylon one-piece cleat with clamp	30-32mm 1 1/8" - 1 1/4"
	CL243 cleat + CL072 clamp	Nylon cleat + Nylon clamp	20-21mm 13/16"
3-5mm 1/8" - 3/16"	CL244 cleat + CL105 clamp	Alloy cleat + Nylon clamp	30-32mm 1 1/8" - 1 1/4"
	CL244 cleat + CL111 clamp	Alloy cleat + Nylon clamp	32-35mm 1 1/4" - 1 3/8"
	CL244 cleat + CL115 clamp	Alloy cleat + Nylon clamp	35-37mm 1 3/8" - 1 7/16"
	CL244 cleat + CL134 clamp	Alloy cleat + Nylon clamp	42-43mm 1 11/16"
4-8mm 5/32" - 5/16"	CL265 cleat	Alloy cleat + Stainless steel clamp	25-31mm 1" - 1 1/8"



Fitting CL235



CL235



CL243+
CL072



CL244+
CL105



CL244+
CL111

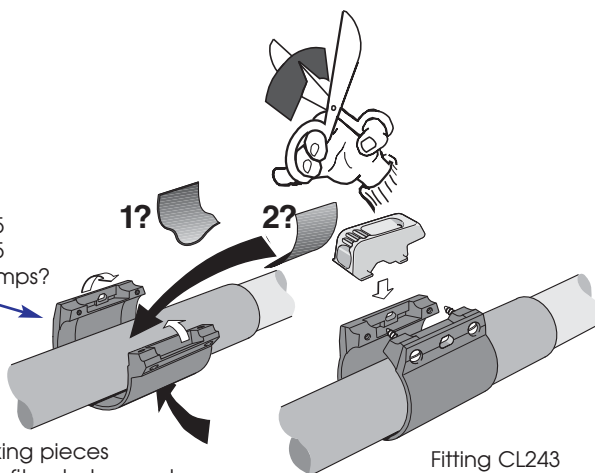


CL244+
CL115



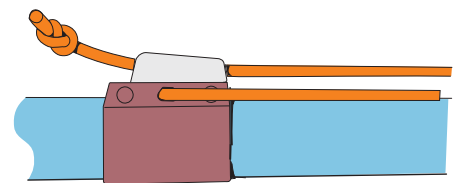
CL244+
CL134

CL072, CL105
CL111, CL115
or CL134 clamps?



Fitting CL243
and CL244

Rubber packing pieces ensure cleats fit onto tapered and non-standard tubes.



The CL244 can also be rigged with 2:1 advantage.

