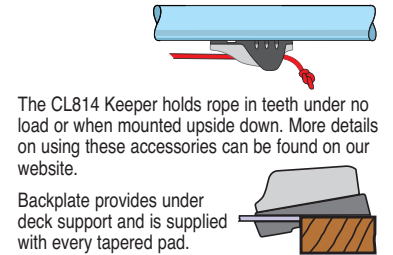
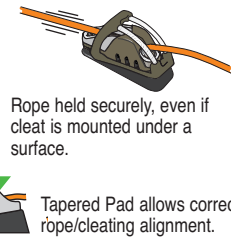
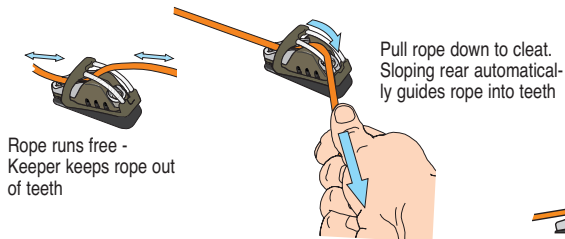
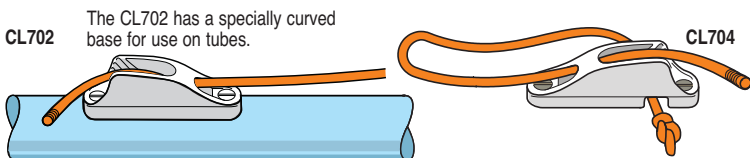


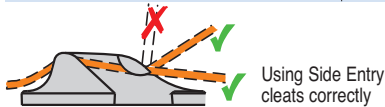
Accessories CL814, CL816 & CL818	mm Ø inch Ø	mm Ø inch Ø	mm Ø Gauge	Gms Ozs
CL814 Keeper (Acetal) for CL203, CL211Mk1, CL211Mk1AN, CL217Mk1, CL218Mk1, CL236 & CL236AN	4.8 3/16	M5 #10	4.8 No10	11 0.4
CL816 Cage (Nylon & Stainless steel) for CL203, CL203/S1, CL211Mk1, CL211Mk1AN, CL236 & AN Requires CL814	—	—	—	30 1.1
CL818 Tapered Pad (Polypropylene) for CL203, CL211Mk1, CL211Mk1AN, CL217Mk1, CL218Mk1, CL236 & AN, CL704 & CL704AN	4.8 3/16	M5 #10	4.8 No10	14 0.5
CK Cleat CL211Mk1+CL814+CL818	4.8 3/16	M5 #10	4.8 No10	76 2.7



Fairlead cleats for ropes to 6mm (1/4")	mm Ø inch Ø	A	B	C	mm Ø inch Ø	mm Ø Gauge	Gms Ozs
Junior CL203 (Nylon)	3 - 6 1/8-1/4	82 3 1/4	66 2 5/8	18 1 1/16	M4 #8	4.2 No8	17 0.6
Racing Junior Mk1 CL211Mk1	3 - 6 1/8-1/4	82 3 1/4	66 2 5/8	18 1 1/16	M5 #10	4.8 No10	34 1.2
Boom Cleat CL702	3 - 6 1/8-1/4	82 3 1/4	66 2 5/8	18 1 1/16	M5 #10	4.8 No10	36 1.3
Boom Cleat with becket CL704	3 - 6 1/8-1/4	82 3 1/4	66 2 5/8	18 1 1/16	M5 #10	4.8 No10	34 1.2



Side entry Cleats Mk1 for ropes to 6mm (1/4")	mm Ø inch Ø	A	B	C	mm Ø inch Ø	mm Ø Gauge	Gms Ozs
Side entry (Starboard) CL217Mk1	3 - 6 1/8-1/4	82 3 1/4	66 2 5/8	18 1 1/16	M5 #10	4.8 No10	32 1.2
Side entry (Port) CL218Mk1	3 - 6 1/8-1/4	82 3 1/4	66 2 5/8	18 1 1/16	M5 #10	4.8 No10	32 1.2



Side entry Cleats Mk2 for ropes to 6mm (1/4")	mm Ø inch Ø	A	B	C	mm Ø inch Ø	mm Ø Gauge	Gms Ozs
Side entry (Starboard) CL217Mk2	3 - 6 1/8-1/4	55 2 1/8	27 1 1/16	17 1 1/16	M4 #8	4.2 No8	24 0.8
Side entry (Port) CL218Mk2	3 - 6 1/8-1/4	55 2 1/8	27 1 1/16	17 1 1/16	M4 #8	4.2 No8	24 0.8

