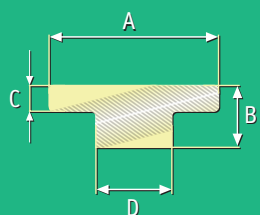
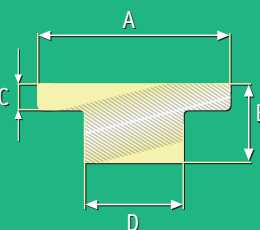


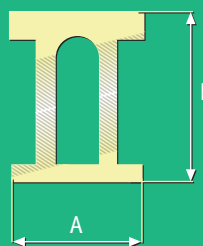
Rotaie/Cursori fiocco e carrello randa



(23.12 - 23.12H)



(23.19 - 23.19H)



(24.17 - 24.17H)

LUNGHEZZE mt 1,50 2 - 3,50	Rotaia in lega leggera anodizzata dura a spessore + PTFE	23.12H	Harcote + PTFE anodised aluminium track	LENGTHS mt 1,50 2 - 3,50
	Rotaia in lega leggera anodizzata	23.12	Anodised aluminium track	
Cursore con ponticello (lungh. mm 65)		23.13	Fairlead slide with welded loop for block attachment (length 2 ¹ / ₂ "	
Max. Ø scotta mm 12	Cursore con passascotte orientabile	23.14	Sliding swivel bullseye	Max. rope Ø 7/16"
	Cursore fiocco con bozzello basculante	23.15	Genoa sheet block	
Cursore con bozzello piano (max Ø scotta mm 8)		23.16	Sliding with block (max rope Ø 5/16")	
Cursore con anello per spinnaker		23.17	Spinnaker pole slide	
Terminale in nylon		23.18	Nylon track end stop	

LUNGHEZZE mt 1,50 2 - 3,50	Rotaia in lega leggera anodizzata dura a spessore + PTFE	23.19H	Harcote + PTFE anodised aluminium track	LENGTHS mt 1,50 2 - 3,50
	Rotaia in lega leggera anodizzata	23.19	Anodised aluminium track	
Cursore in lega leggera anodizzata dura con fermo a scatto e bozzello su sfere (max. Ø scotta mm 12)		23.20	Stand up genoa block on hardcote anodised slide (max rope Ø 7/16")	
Cursore fiocco in lega leggera anodizzata dura con fermo a scatto e bozzello basculante (max. Ø scotta mm 14)		23.21	Hardcote anodised aluminium genoa sheet slide (max rope Ø 9/16")	
Terminale in nylon		23.22	Nylon track end stop	
Cursore in lega leggera anodizzata dura con fermo a scatto e ponticello		23.23	Hardcote anodised aluminium loop slide	

LUNGHEZZE mt 1,50 2 - 3,50	Rotaia in lega leggera anodizzata dura a spessore + PTFE	24.17H	Harcote + PTFE anodised aluminium track	LENGTHS mt 1,50 2 - 3,50
	Rotaia in lega leggera anodizzata	24.17	Anodised aluminium track	
Carrello inox scorrevole su quattro carrucole con ponticello e pulegge di rinvio (max. Ø scotta mm 8)		24.18	Traveller with four rollers s/s staple and control line sheaves (max rope Ø 5/16")	
Terminale in nylon		24.19	Nylon track end stop	
Terminale in nylon a parete		24.20	Nylon track end stop	
Terminale in nylon a parete con bozzello (max. Ø scotta mm 8)		24.21	Nylon track end stop with block (max rope Ø 5/16")	

23.12H			23.19H			24.17H		
mm	23.12	IN.	mm	23.19	IN.	mm	24.17	IN.
22	A	7/8"	26	A	1"	18	A	3/4"
8	B	5/16"	11	B	13/32"	23	B	15/16"
3,3	C	1/8"	4	C	5/32"	5	Ø FORI	HOLESPACING
10	D	3/8"	14	D	9/16"	100	INTER. FORI	HOLE SPACING
5	Ø FORI	HOLESPACING	3/16"	6	Ø FORI	HOLESPACING	1/4"	
100	INTER. FORI	HOLE SPACING	3 ¹⁵ / ₁₆ "	100	INTER. FORI	HOLE SPACING	3 ¹⁵ / ₁₆ "	

Tracks/Sliding fittings & traveller

