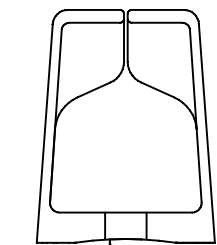
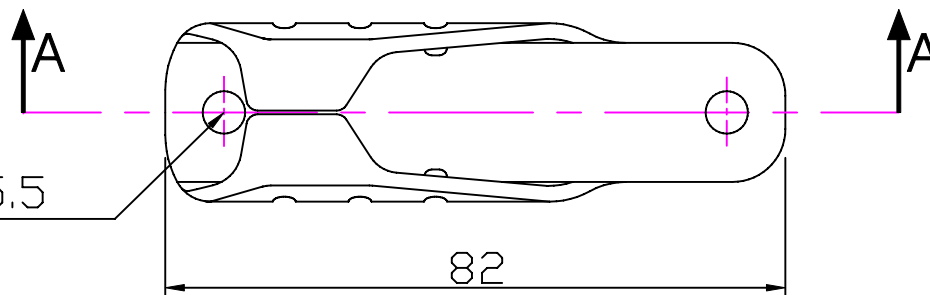
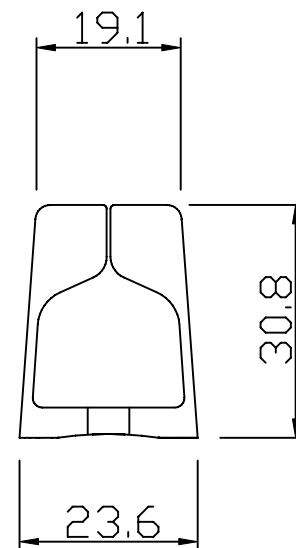
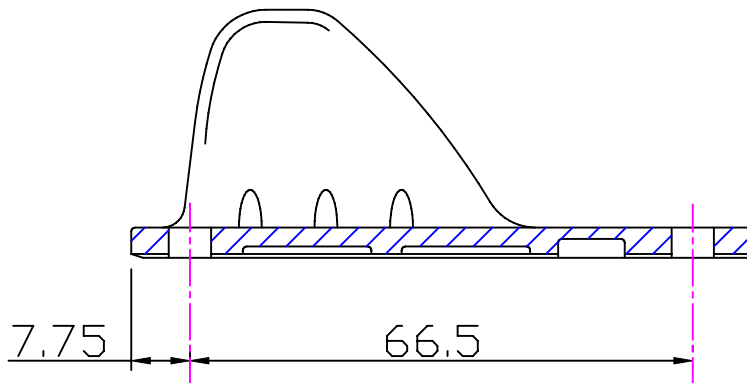


M5 4.8/5mm ϕ 3-6mm
 #10 (3/16") No.10 1/8" - 1/4"

Section 'AA'



R45



2 Holes ϕ 5.5

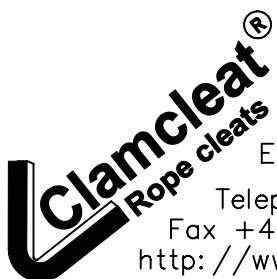
82

Instructions and compatible cleats on page 2

Issue: 2 May 2006
 Page1 of 2 ID814.dwg

Material:
 Acetal

Installation Drawing for:-
CL814
 Keeper for CL203, CL211mk1, CL211mk1AN, CL217mk1, CL218mk1, CL236, CL236AN



Clamcleats Limited
 Watchmead
 Welwyn Garden City
 Hertfordshire AL7 1AP
 England

Telephone +44 (0)1707 330101
 Fax +44 (0)1707 321269
<http://www.clamcleat.com>



Scale 1:1
 All dimensions in mm.

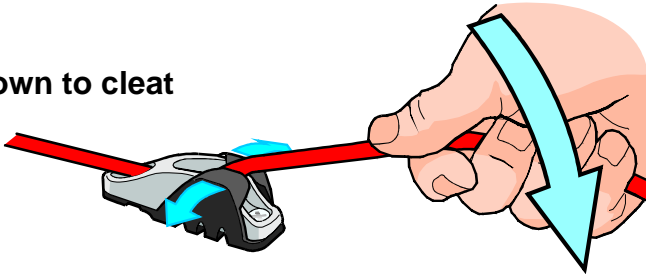
Rope runs free

Keeper is closed to stop rope going into cleat teeth.



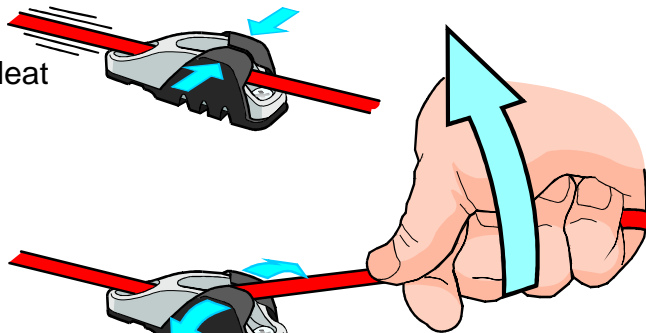
Pull rope back and down to cleat

Keeper opens to allow rope into teeth



Rope gripped

Keeper holds rope in cleat



Lift up to release

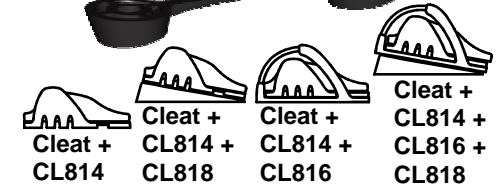
Keeper opens to allow rope out of teeth



Rope runs free again



CL814 Keeper can be used with a variety of cleats and other accessories.



Cleat	Cleat + CL814	Cleat + CL818	Cleat + CL816	Cleat + CL814 + CL816 + CL818
CL203	✓	✓	✓	✓
CL203W/S1	✓	✓	✓	✓
CL211 Mk1	✓	✓	✓	✓
CL211 Mk1AN	✓	✓	✓	✓
CL217 Mk1	✓	✓		
CL217 Mk1AN	✓	✓		
CL218 Mk1	✓	✓		
CL218 Mk1AN	✓	✓		
CL236	✓	✓	✓	✓
CL236AN	✓	✓	✓	✓



Clamcleats Limited
 Watchmead
 Welwyn Garden City
 Hertfordshire AL7 1AP
 England

Telephone +44 (0)1707 330101
 Fax +44 (0)1707 321269
 www.clamcleat.com

ID814
 page 2 of 2

Issue 3
 Aug 2008

Installation Drawing for:-

CL814

Keeper for CL203
 & Mk1 Racing Juniors