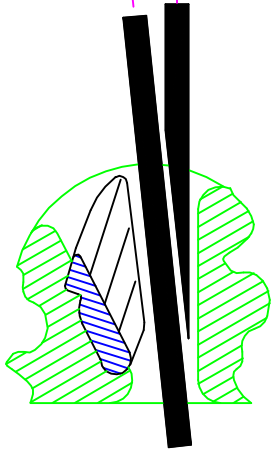




∅3 – 4mm

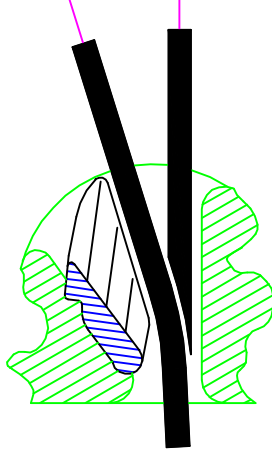
1/8" – 5/32"

Cleat at this angle. Adjust at this angle.



Quick cleating arrangement

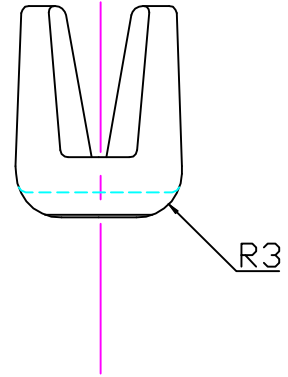
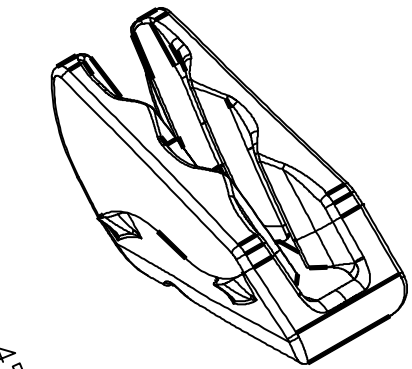
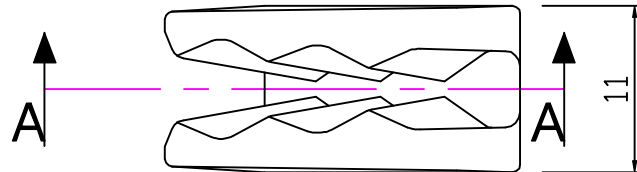
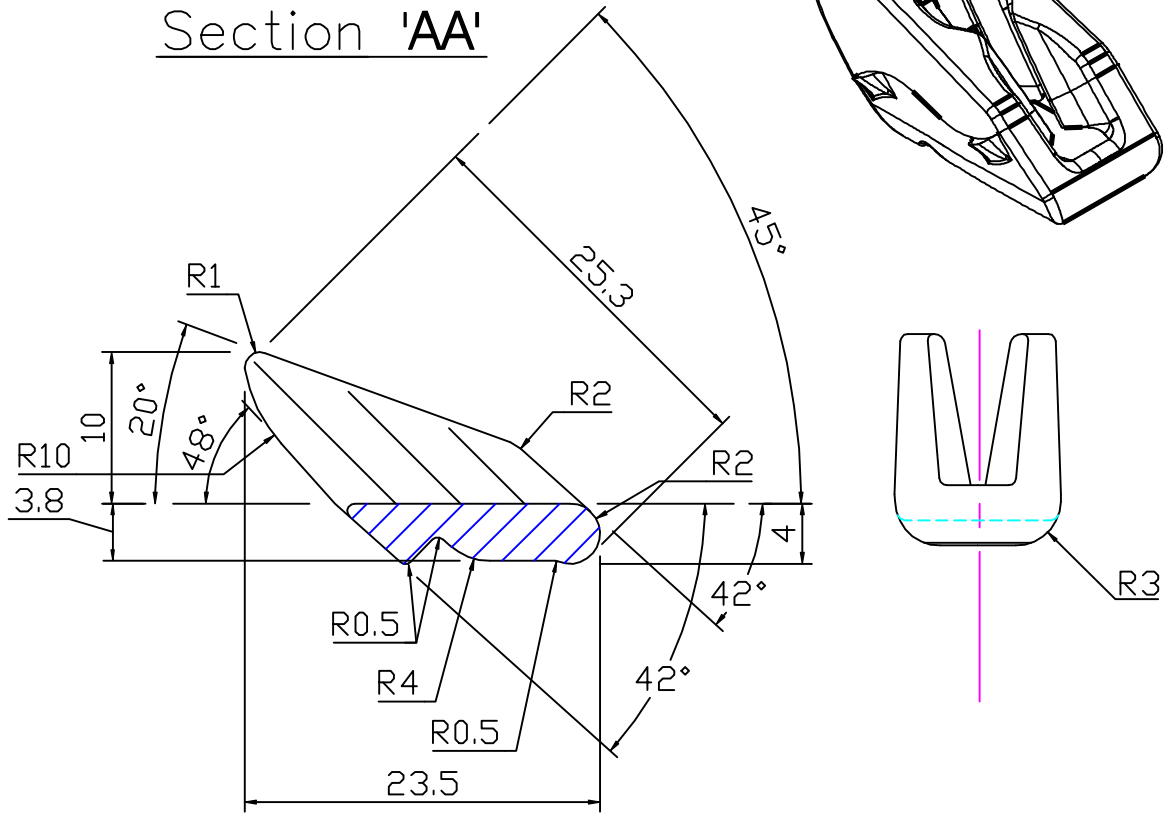
Cleat at this angle. Adjust at this angle.



Rope stays clear during tensioning

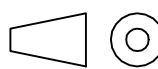
(Variations between these arrangements would also work)

Section 'AA'



Clamcleats Limited
 Watchmead
 Welwyn Garden City
 Hertfordshire AL7 1AP
 England

Telephone +44 (0)1707 330101
 Fax +44 (0)1707 321269
<http://www.clamcleat-rope-cleats.com>



Scale 2:1
 All dimensions in mm.

Issue: 2 May 2001
 ID716.dwg

Material:
 Diecast Aluminium

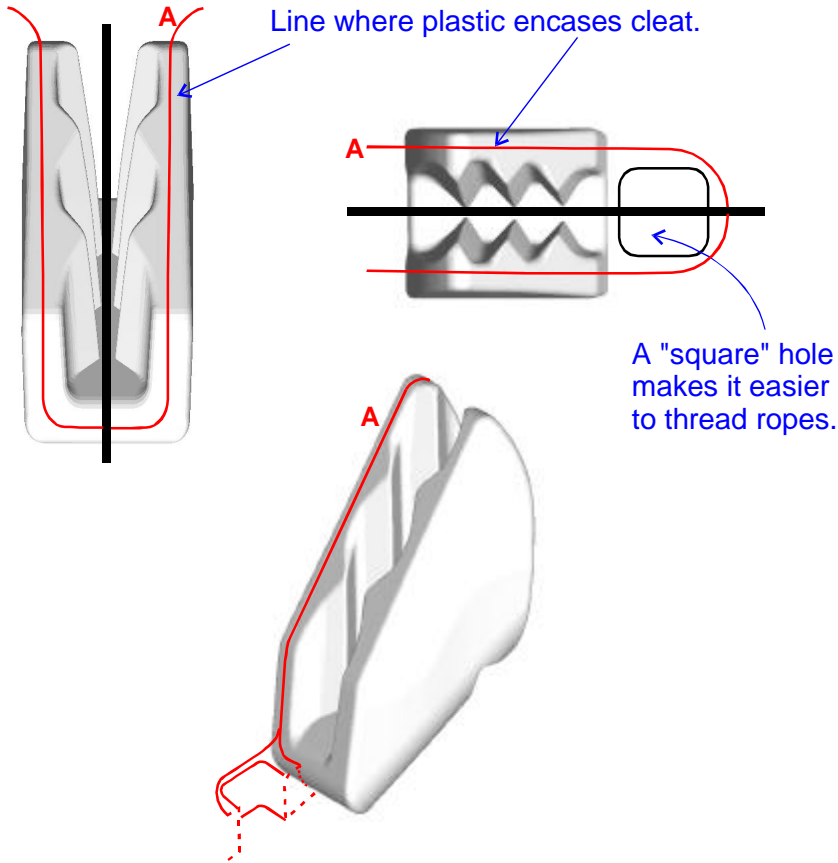
Installation Drawing for:-

CL716

Small Cleat Insert

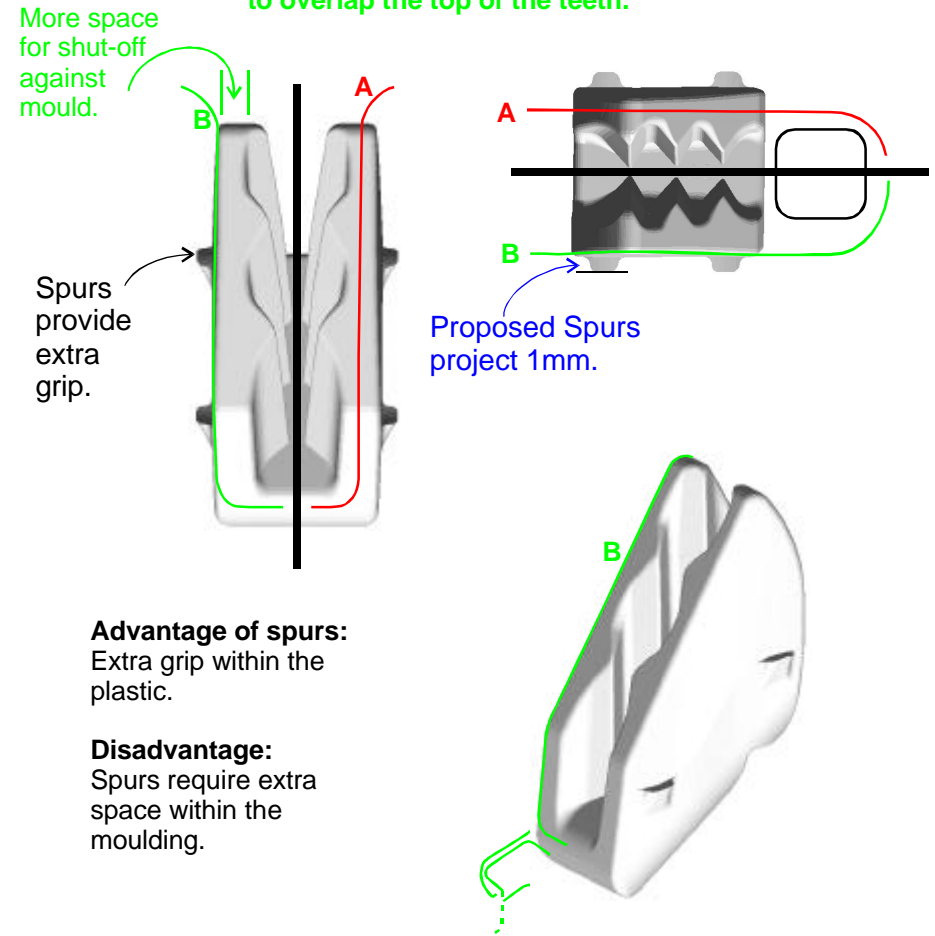
Pocket design guidelines. CL716 without spurs.

A. The sides of the CL716 are wide enough for the over-moulded plastic to grip the cleat very well.



Pocket design guidelines. CL716 with proposed spurs.

B. Spurs mean that the moulding does not have to overlap the top of the teeth.



Advantage of spurs:
Extra grip within the plastic.

Disadvantage:
Spurs require extra space within the moulding.

For 3D computer modelling, IGES files of the outside shapes are available.
Please ask for CL716os.igs and CL716oss.igs (with spurs).

ID716 page 2
Issue 1. May 2001
©Clamcleats Ltd 2001

Clamcleat®
Rope cleats
Clamcleats Limited
Watchmead
Welwyn Garden City
Hertfordshire AL7 1AP
England

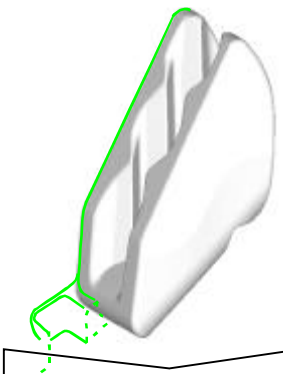
Telephone +44 (0)1707 330101
Fax +44 (0)1707 321269

Email sales@clamcleat-rope-cleats.com
website <http://www.clamcleat-rope-cleats.com>

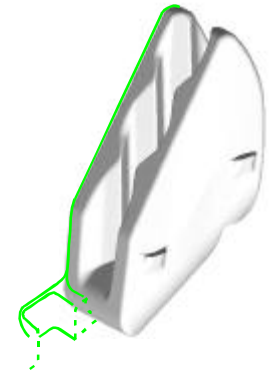
**Information for
INSERT MOULDING CL716**

Pocket design guidelines. CL716 without spurs.

The tapered sides of the CL716 allow good grip as the plastic shrinks onto the cleat after it has been pressed in.



Press cleat into moulding in this direction.
(This is best done when the moulding is hot, straight off the injection moulding machine).

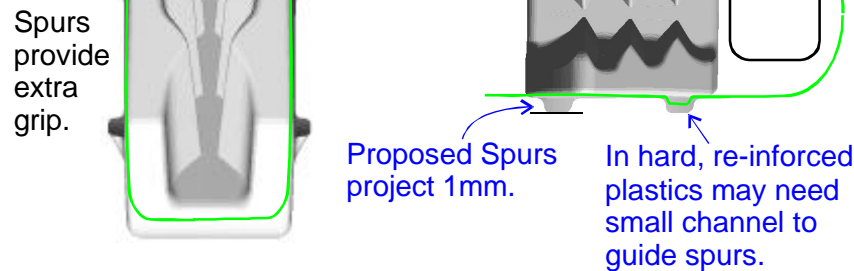
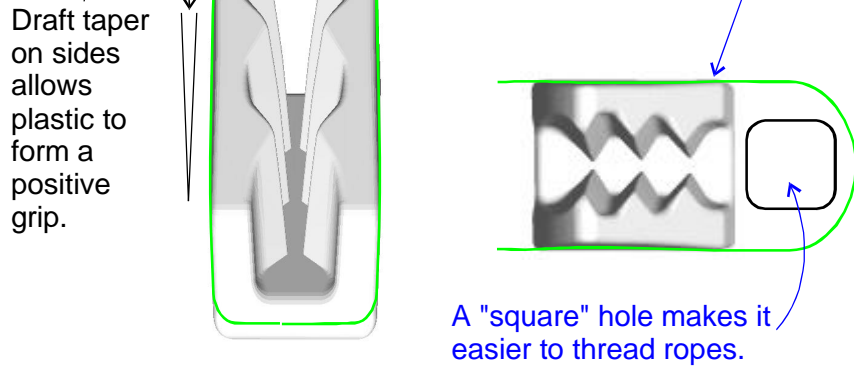


Pocket design guidelines. CL716 with proposed spurs.

Advantage of spurs:
Extra grip within the plastic.

Disadvantage:
Spurs require extra space within the moulding.

Note:
May require a small undercut within moulding to accommodate spurs, once inserted.
Or, cleat can be heated before insertion.
Or, cleat can be inserted using ultrasonics.



For 3D computer modelling, IGES files of the outside shapes are available.
Please ask for CL716os.igs and CL716oss.igs (with spurs).

ID716 page 3
Issue 1. May 2001
©Clamcleats Ltd 2001

Clamcleat®
Rope cleats
Clamcleats Limited
Watchmead
Welwyn Garden City
Hertfordshire AL7 1AP
England

Telephone +44 (0)1707 330101
Fax +44 (0)1707 321269

Email sales@clamcleat-rope-cleats.com
website <http://www.clamcleat-rope-cleats.com>

Information for PRESSING CL716 INTO POCKET