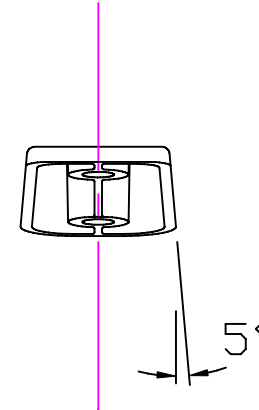
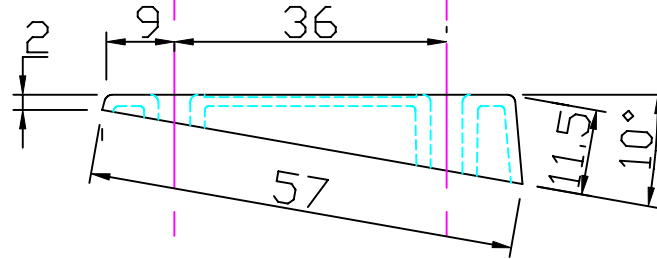
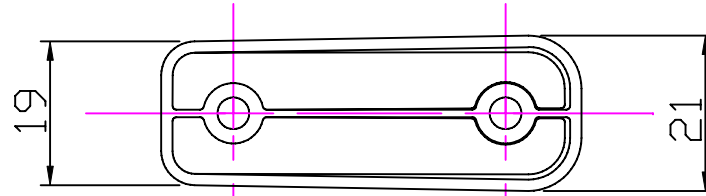
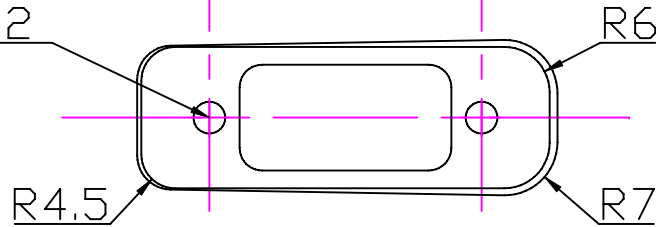


Application



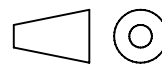
2 Holes $\phi 4.2$



Clamcleat®
Rope cleats

Clamcleats Limited
Watchmead
Welwyn Garden City
Hertfordshire AL7 1AP
England

Telephone +44 (0)1707 330101
Fax +44 (0)1707 321269
<http://www.clamcleat-rope-cleats.com>



Scale 1:1
All dimensions in mm.

Issue: 3.	May 2006 ID802.dwg
Material: Polypropylene	
Installation Drawing for:- CL802 Tapered Pad for CL204 & CL222	