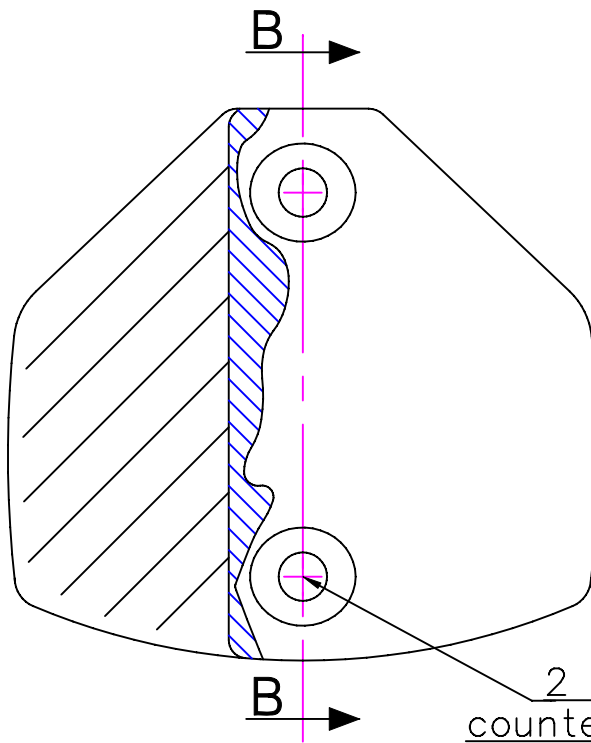
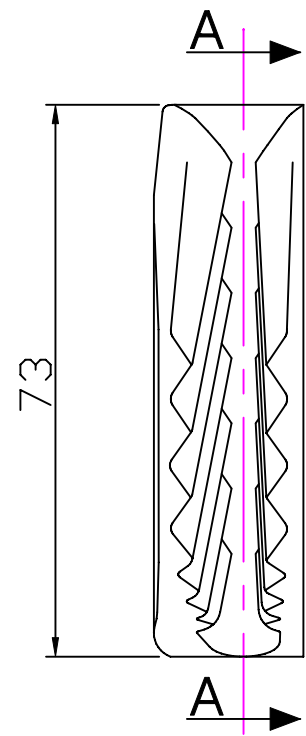
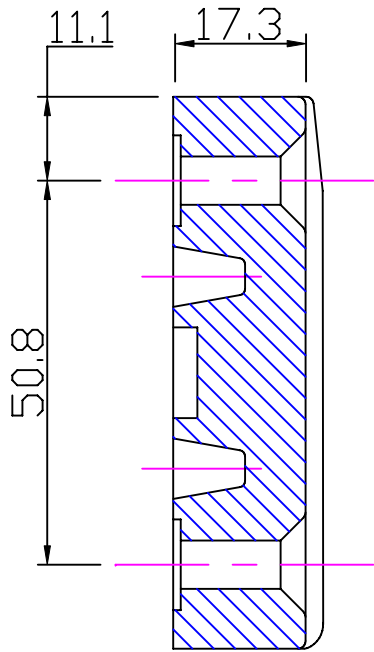


Section 'BB'



2 Holes $\phi 6.5$
countersunk $\phi 13 \times 90^\circ$

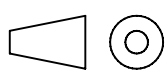


Part Section 'AA'



Clamcleats Limited
Watchmead
Welwyn Garden City
Hertfordshire AL7 1AP
England

Telephone +44 (0)1707 330101
Fax +44 (0)1707 321269
<http://www.clamcleat-rope-cleats.com>



Scale 1:1
All dimensions in mm.

Issue: 2. May 2006
ID202.dwg

Material:
Nylon

Installation Drawing for:-
CL202
Horizontal