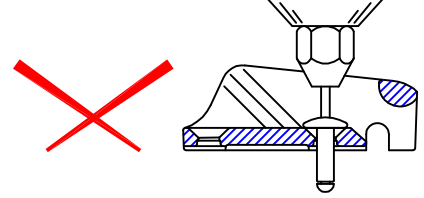
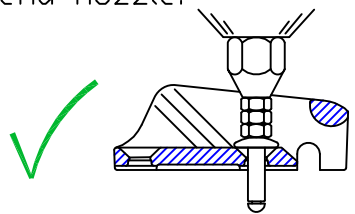


Notes: -
For marine applications, use a silicone sealant or a bedding compound to avoid electrolytic action between the cleat and metal fastenings.

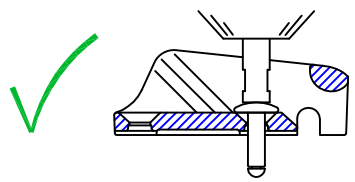
Standard rivet gun nozzles do not fit inside cleat.



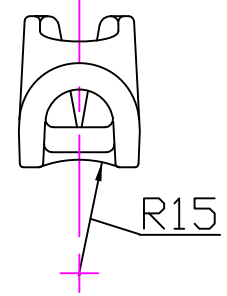
Use 2 or 3 nuts to extend nozzle.



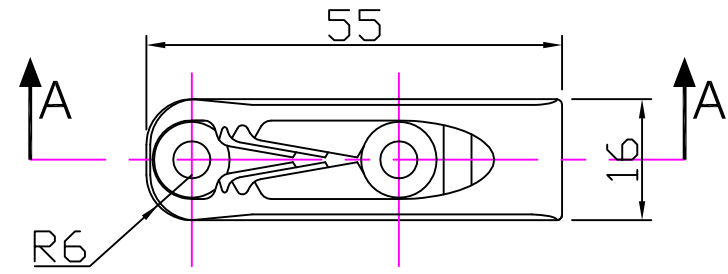
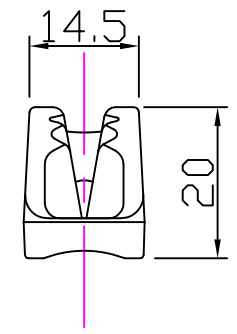
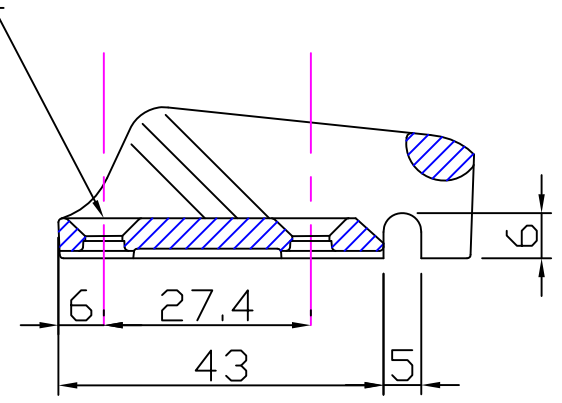
Extended nozzle is best
Consult rivet gun supplier.



2 Holes $\phi 4.9$
countersunk $\phi 10.0 \times 90^\circ$



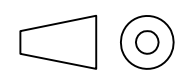
Section 'AA'



Clamcleat®
Rope cleats

Clamcleats Limited
Watchmead
Welwyn Garden City
Hertfordshire AL7 1AP
England

Telephone +44 (0)1707 330101
Fax +44 (0)1707 321269
Email sales@clamcleat.com
www.clamcleat.com



Scale 1:1
All dimensions in mm.

Issue: 6 April 2010
ID211-Mk2s2.dwg

Material:
Diecast Aluminium

Installation Drawing for: -
CL211 Mk2/S2
Mk2 Racing Junior
with Becket