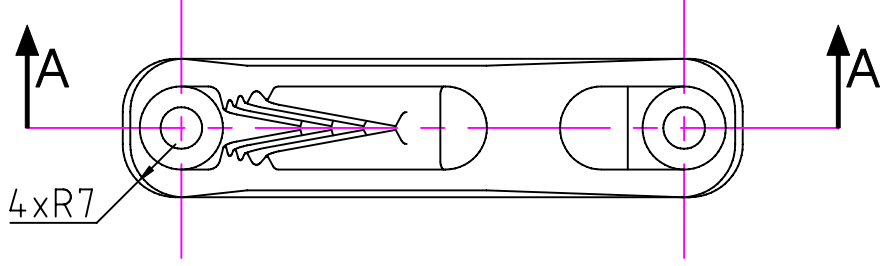
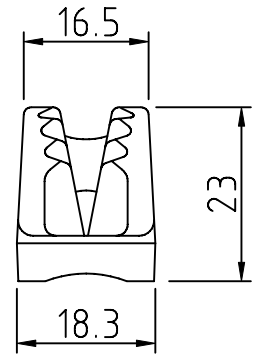
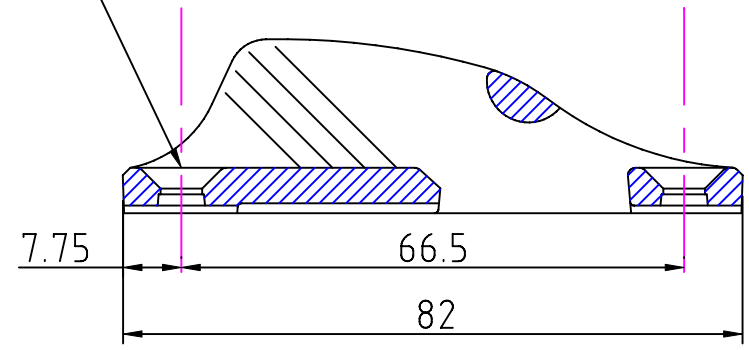
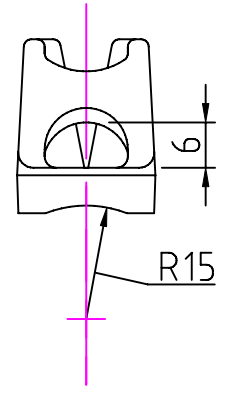


Notes: –
 For marine applications, use a silicone sealant or a bedding compound to avoid electrolytic action between the cleat and metal fastenings.

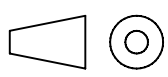
2 Holes $\phi 5.5$
 countersunk $\phi 10.0 \times 90^\circ$

Section 'AA'



Clamcleats Limited
 Watchmead
 Welwyn Garden City
 Hertfordshire AL7 1AP
 England

Telephone +44 (0)1707 330101
 Fax +44 (0)1707 321269
<http://www.clamcleat-rope-cleats.com>



Scale 1:1
 All dimensions in mm.

Issue: 3. May 2006
 ID2111.dwg

Material:
 Diecast Aluminium

Installation Drawing for: –
CL211 Mk1
 Mk1 Racing Junior