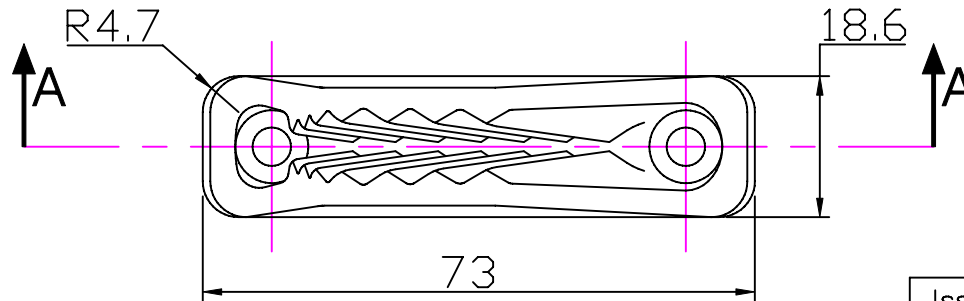
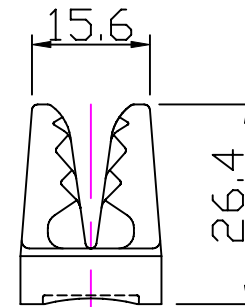
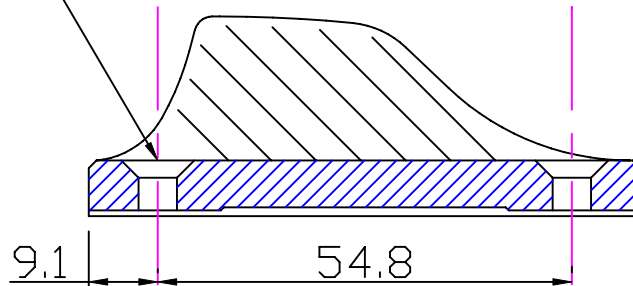
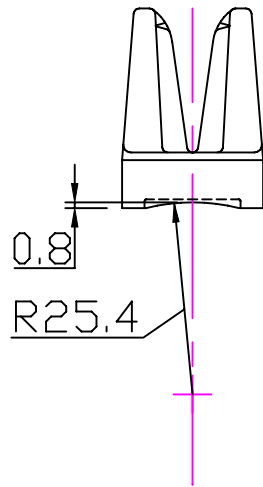


2 Holes  $\phi 5.2$   
countersunk  $\phi 9.6 \times 90^\circ$

Section 'AA'



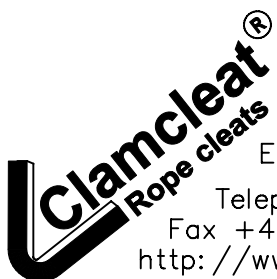
Issue: 2. May 2006  
ID209.dwg

Material:  
Nylon

Installation Drawing for: -

**CL209**

Midi



Clamcleats Limited  
Watchmead  
Welwyn Garden City  
Hertfordshire AL7 1AP  
England

Telephone +44 (0)1707 330101  
Fax +44 (0)1707 321269  
<http://www.clamcleat-rope-cleats.com>



Scale 1:1  
All dimensions in mm.