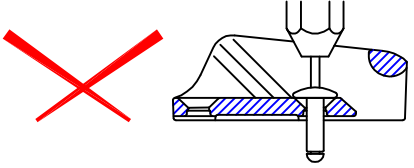
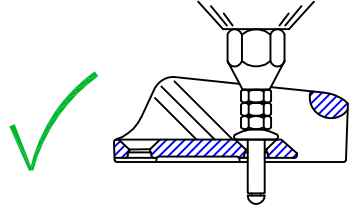


Notes: -
 For marine applications, use a silicone sealant or a bedding compound to avoid electrolytic action between the cleat and metal fastenings.

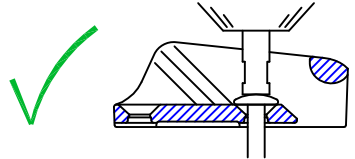
Standard rivet gun nozzles do not fit inside cleat.



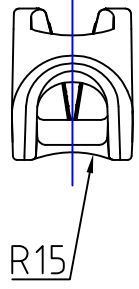
Use 2 or 3 nuts to extend nozzle.



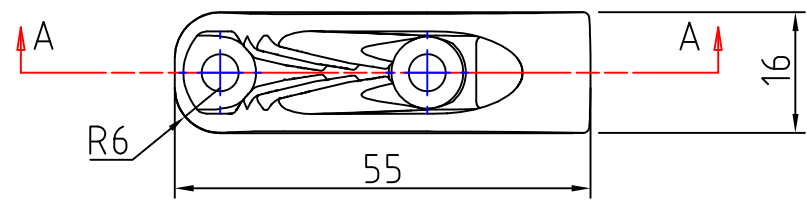
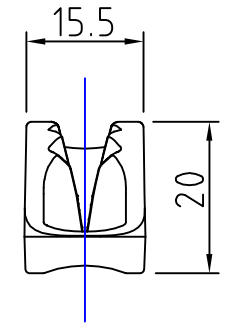
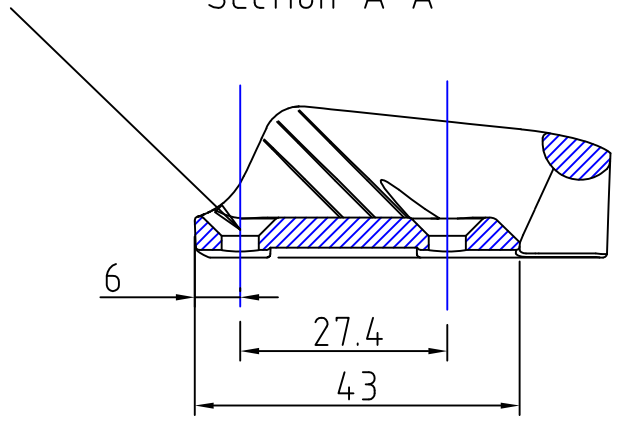
Extended nozzle is best
 Consult rivet gun supplier.



2 Holes Ø4.9
 CSK Ø10x90°

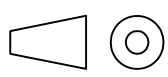


Section 'A-A'



Clamcleat®
 Rope cleats

Clamcleats Limited
 Watchmead
 Welwyn Garden City
 Hertfordshire AL7 1AP
 England
 Telephone +44 (0)1707 330101
 Fax +44 (0)1707 321269
 Email sales@clamcleat.com
 www.clamcleat.com



Scale 1:1
 All dimensions in mm.

Issue: 1	April 2010
ID272.dwg	
Material:	Nylon
Installation Drawing for:-	CL272 Mk2 Junior